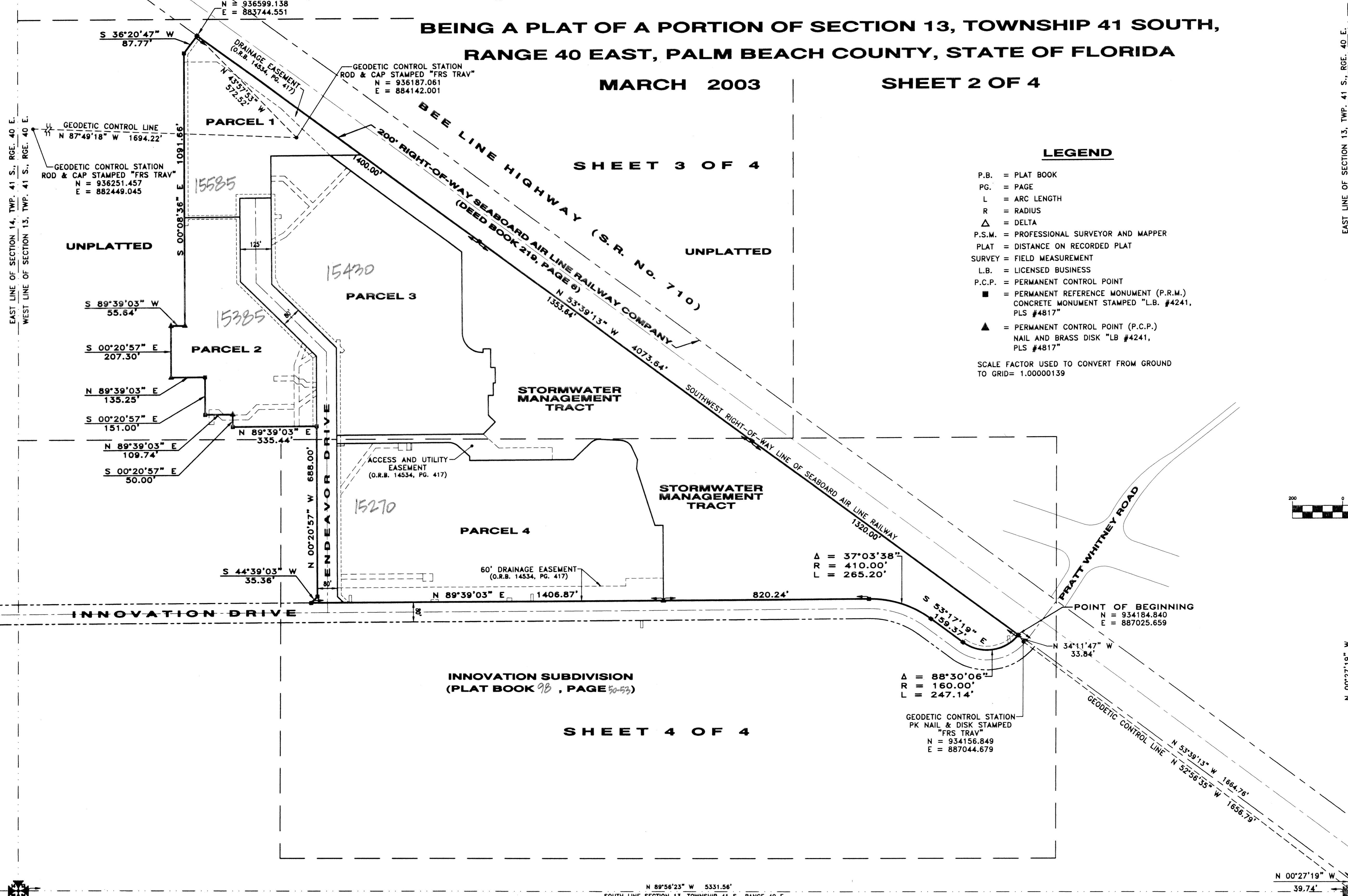


BLACKBIRD SUBDIVISION

BEING A PLAT OF A PORTION OF SECTION 13, TOWNSHIP 41 SOUTH,
RANGE 40 EAST, PALM BEACH COUNTY, STATE OF FLORIDA

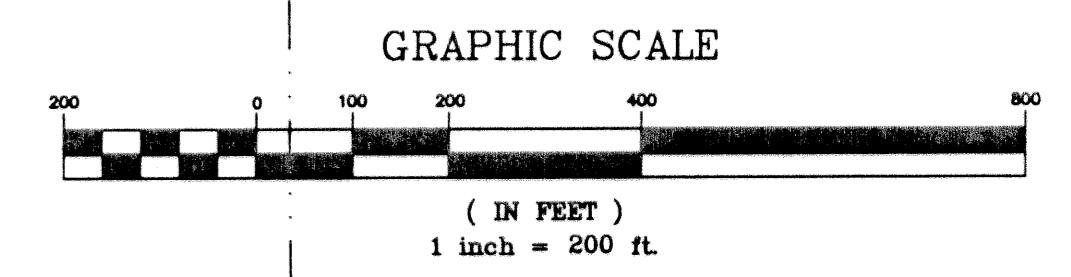
MARCH 2003

SHEET 2 OF 4



LEGEND

- P.B. = PLAT BOOK
 - PG. = PAGE
 - L = ARC LENGTH
 - R = RADIUS
 - Δ = DELTA
 - P.S.M. = PROFESSIONAL SURVEYOR AND MAPPER
 - PLAT = DISTANCE ON RECORDED PLAT
 - SURVEY = FIELD MEASUREMENT
 - L.B. = LICENSED BUSINESS
 - P.C.P. = PERMANENT CONTROL POINT
 - = PERMANENT REFERENCE MONUMENT (P.R.M.)
CONCRETE MONUMENT STAMPED "L.B. #4241,
PLS #4817"
 - ▲ = PERMANENT CONTROL POINT (P.C.P.)
NAIL AND BRASS DISK "LB #4241,
PLS #4817"
- SCALE FACTOR USED TO CONVERT FROM GROUND
TO GRID= 1.00000139



SUBDIVISION BLACKBIRD SUBDIVISION
 BOOK 98 PAGE 55
 FLOOD ZONE B
 ZONING MAP D
 QUAD# 50
 SE
 TAZ B22
 PUD NAME

THIS INSTRUMENT PREPARED BY GARY P. WILLIAMS IN THE OFFICES OF
 F.R.S. & ASSOCIATES, INC. 901 NORTHPOINT PARKWAY, SUITE 301,
 WEST PALM BEACH, FLORIDA PHONE: (561) 478-7178

F.R.S. & ASSOCIATES, INC. LAND SURVEYORS AND LAND PLANNERS CERTIFICATE OF AUTHORIZATION NO. LB 4241 901 NORTHPOINT PARKWAY, SUITE 301 WEST PALM BEACH, FLORIDA 33407-1953 PHONE (561) 478-7178 FAX (561) 478-7922			
SCALE: 1" = 200'	DRAWN BY: T.C.M.	FIELD BOOK	CADD REF.
DATE: 12/2002	APPR. BY: G.P.W.	PW 1 & 2	\\DRAW\PRATT\SITE PLATING BLACKBIRD SUBDIVISION SHIT 02
BLACKBIRD SUBDIVISION			JOB NUMBER:
SECTIONS 13, TOWNSHIP 41 SOUTH, RANGE 40 EAST			D 2K-021D
PALM BEACH COUNTY, FLORIDA			SHEET 2 OF 4